

CAJA POLARIZADA PARA TERM. DE ENGASTE

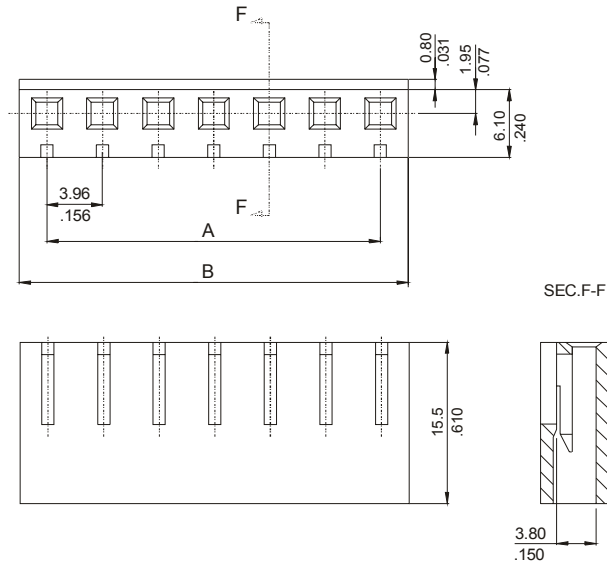
SERIE 3940-A Paso 3.96 mm. (0.156"). Con rampa de anclaje

Características

- Disponible de 2 a 20 circuitos
- Polarizada con rampa de anclaje
- Material : nylon 6/6 UL 94V-0

- Se complementa con terminales series 3979, 3060, 3079 y 3032
- Conecta con regletas series: 3963, 3966, 3968, 3986, 3987, 3988, 3910 y 3911

Figuras y dimensiones



Códigos y dimensiones

| CIRCUITOS | CÓDIGO | DIMENSIONES | |
|-----------|-----------|--------------|--------------|
| | | A | B |
| 02 | 3940-2021 | 3,96(0,156) | 8,50(0,335) |
| 03 | 3940-2031 | 7,92(0,312) | 12,50(0,491) |
| 04 | 3940-2041 | 11,88(0,468) | 16,40(0,647) |
| 05 | 3940-2051 | 15,84(0,624) | 20,40(0,803) |
| 06 | 3940-2061 | 19,80(0,780) | 24,40(0,959) |
| 07 | 3940-2071 | 23,76(0,935) | 28,30(1,115) |
| 08 | 3940-2081 | 27,72(1,091) | 32,30(1,271) |
| 09 | 3940-2091 | 31,68(1,247) | 36,20(1,427) |
| 10 | 3940-2101 | 35,64(1,403) | 40,20(1,583) |
| 11 | 3940-2111 | 39,60(1,559) | 44,20(1,739) |
| 12 | 3940-2121 | 43,56(1,715) | 48,10(1,894) |
| 13 | 3940-2131 | 47,52(1,871) | 52,10(2,050) |
| 14 | 3940-2141 | 51,48(2,027) | 56,00(2,206) |
| 15 | 3940-2151 | 55,44(2,183) | 60,00(2,362) |
| 16 | 3940-2161 | 59,40(2,339) | 64,00(2,518) |
| 17 | 3940-2171 | 63,36(2,494) | 67,90(2,674) |
| 18 | 3940-2181 | 67,32(2,650) | 71,90(2,830) |
| 19 | 3940-2191 | 71,28(2,806) | 75,80(2,986) |
| 20 | 3940-2201 | 75,24(2,962) | 79,80(3,142) |

CAJA PARA TERMINAL DE ENGASTE

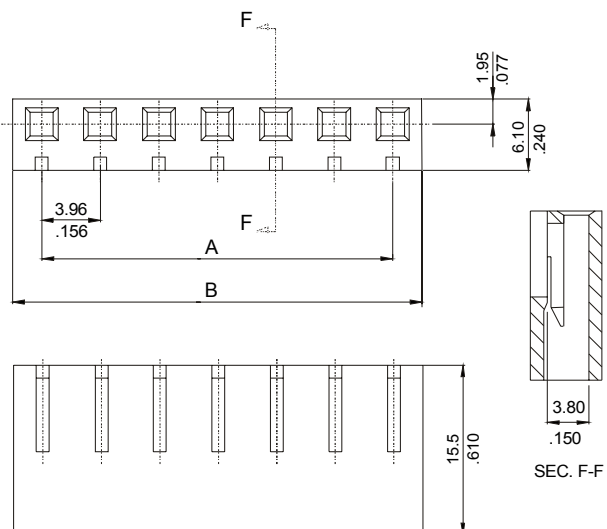
SERIE 3940-B Paso 3.96 mm. (0.156"). Sin rampa de anclaje

Características

- Disponible de 2 a 20 circuitos
- Polarizada sin rampa de anclaje
- Material : nylon UL 94V-0

- Se complementa con terminales series 3979, 3060, 3079 y 3032
- Conecta con regletas series: 3963, 3966, 3968, 3986, 3987, 3988, 3910 y 3911

Figuras y dimensiones



Códigos y dimensiones

| CIRCUITOS | CÓDIGO | DIMENSIONES | |
|-----------|-----------|--------------|--------------|
| | | A | B |
| 02 | 3940-3021 | 3,96(0,156) | 8,50(0,335) |
| 03 | 3940-3031 | 7,92(0,312) | 12,50(0,491) |
| 04 | 3940-3041 | 11,88(0,468) | 16,40(0,647) |
| 05 | 3940-3051 | 15,84(0,624) | 20,40(0,803) |
| 06 | 3940-3061 | 19,80(0,780) | 24,40(0,959) |
| 07 | 3940-3071 | 23,76(0,935) | 28,30(1,115) |
| 08 | 3940-3081 | 27,72(1,091) | 32,30(1,271) |
| 09 | 3940-3091 | 31,68(1,247) | 36,20(1,427) |
| 10 | 3940-3101 | 35,64(1,403) | 40,20(1,583) |
| 11 | 3940-3111 | 39,60(1,559) | 44,20(1,739) |
| 12 | 3940-3121 | 43,56(1,715) | 48,10(1,894) |
| 13 | 3940-3131 | 47,52(1,871) | 52,10(2,050) |
| 14 | 3940-3141 | 51,48(2,027) | 56,00(2,206) |
| 15 | 3940-3151 | 55,44(2,183) | 60,00(2,362) |
| 16 | 3940-3161 | 59,40(2,339) | 64,00(2,518) |
| 17 | 3940-3171 | 63,36(2,494) | 67,90(2,674) |
| 18 | 3940-3181 | 67,32(2,650) | 71,90(2,830) |
| 19 | 3940-3191 | 71,28(2,806) | 75,80(2,986) |
| 20 | 3940-3201 | 75,24(2,962) | 79,80(3,142) |